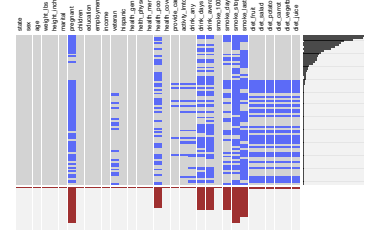


Visna—Visualising Multivariate Missing Values



- Large datasets may have many cases
 - so one row per case does not work
- Large datasets may have many variables
 - so filtering is needed
- Large datasets may have many missing values
 - so all displays may have difficulties
- BUT, it's good to know where the missings are

Risk Factors Survey: 33 vars, 432607 cases
(variables in the columns, patterns in the rows,
restricted to patterns covering 99% of missings)

